

SHORT FILM SCREENING: PEOPLE OF RED MOUNTAIN LIFE OVER LITHIUM

Watch it on youtube:



Attendance:



Sponsors:



SDSU | Student Affairs and Campus Diversity
Student Success Fee



ggsa.sdsu.edu



ggsa.sdsu@gmail.com



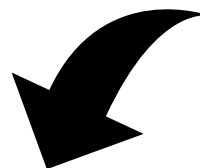
[ggsa.sdsu](https://www.instagram.com/ggsa.sdsu)



Here's what happened...

The Geography Graduate Student Association was delighted to host a thought-provoking screening of the short film "People of Red Mountain: Life over Lithium" at San Diego State University. This powerful short film highlighted the impact of lithium mining on sacred Indigenous lands, sparking a dynamic and engaging Q&A session afterward. Our speakers, including members from the People of Red Mountain and the film's co-producer and director, provided deep insights into the challenges faced by these communities. We were thrilled to see attendance exceed 100 participants, underscoring the community's interest in and commitment to these critical issues. We extend our heartfelt thanks to all attendees, speakers, and our volunteers.

More photos
of the event

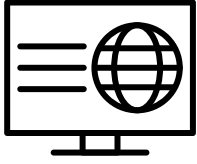




KUMEYAAY LAND ACKNOWLEDGMENT

Prepared by Giorgio H. Curti

[Please click here to read the statement on our main webpage](#)



[Check out our webpage to see more information about the screening & PRM](#)



Please support
People of Red
Mountain



People of Red Mountain (PRM) call for the McDermitt Caldera's protection, including Peehee Mu'huh – Thacker Pass. The McDermitt Caldera is located in the Northern Nevada and Southeast Oregon area, in a remote and mostly untouched part of the sagebrush steppe. **The McDermitt Caldera should be protected from lithium mining and other natural resource extraction to preserve the knowledge for the next seven generations.** PRM value the traditional and place-based knowledge that was shaped by these landscapes. PRM requests that all people respect the landscape and everything it holds too.

<https://peopleofredmountain.com>

A *Thank You!* from
our planning team

The GGSA Climate Talks planning team would like to extend a big *thank you* to all who took the time to attend. We hope the film provided a setting for much-needed insights, teachings, challenges, correctives, and contributions from deep-time and deep-space Indigenous stewards of the lands and waters facing increasing destruction and imbalance resulting from colonial- and industrial-induced climate change. May we each be challenged to think about our world and act in a deeper-informed way.



Corrie
Monteverde



Sam Orndorff



Judy Bross



Kristen
Monteverde